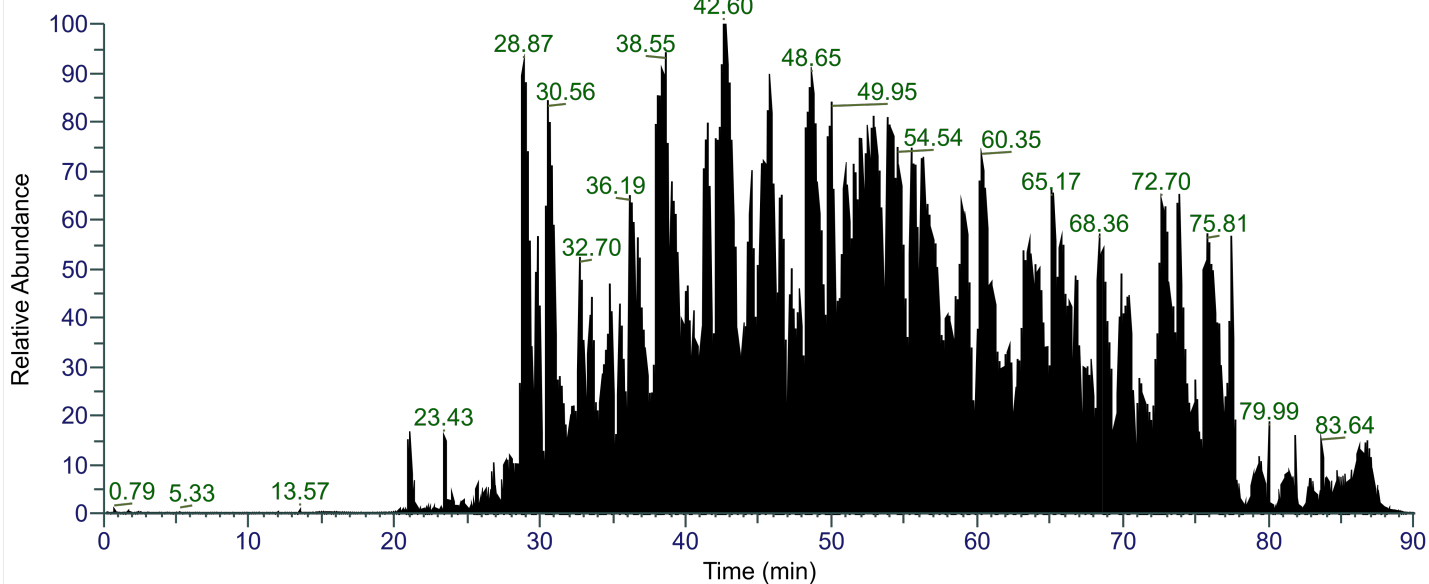
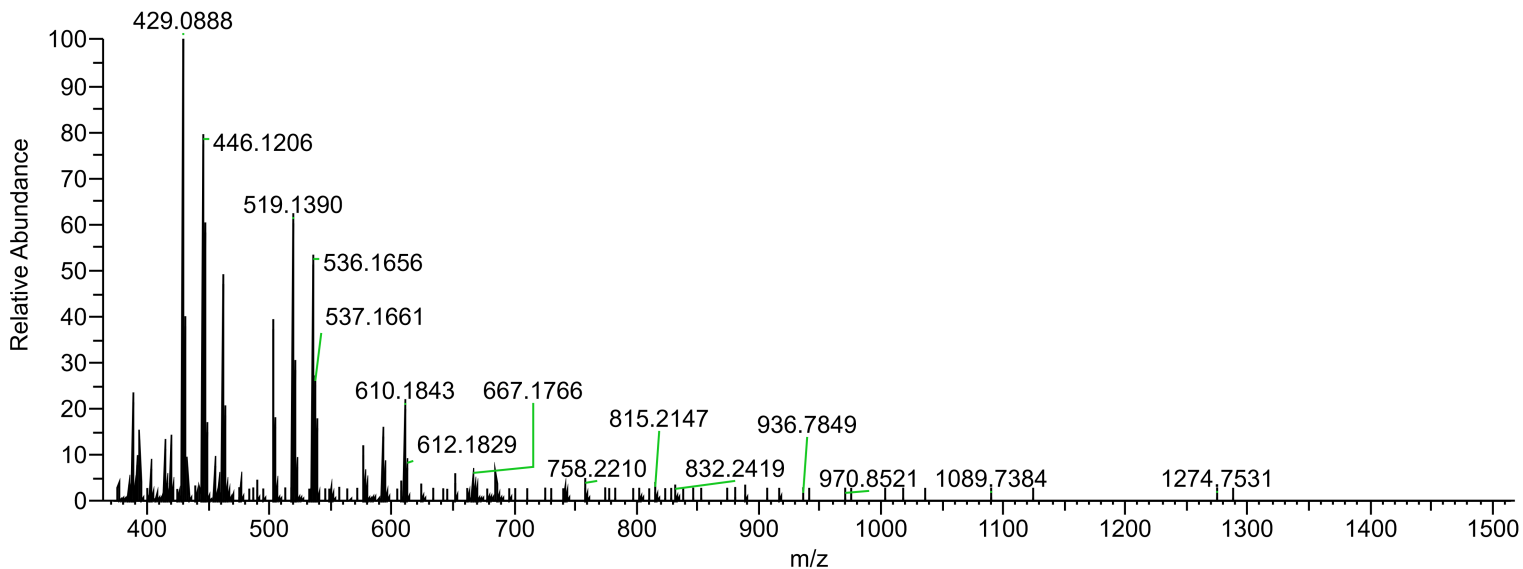


RT: 0.00-90.00

NL: 1.26E10
TIC MS
041922-TAMUK-
mouse-plasma-
EV-3



041922-TAMUK-mouse-plasma-EV-3 #1 RT: 0.00 AV: 1 NL: 6.04E+005
T: FTMS + p NSI Full lock ms [375.0000-1500.0000]



| | |
|-------------------------|---|
| Acquisition Date / Time | 4/18/2022 10:30:26 PM |
| Sample Name | |
| Comment | |
| Seq Row | 2 |
| Sample Type | Unknown |
| Path | C:\Xcalibur\data\Anton |
| Cal Level | |
| Cal File | |
| Inj Volume | 5 |
| Sample Weight | 0 |
| Sample Volume | 0 |
| Sample Id | GA1 |
| Istd Amount | 0 |
| CD Factor | 1 |
| Bar Code | |
| Bar Code Status | 0 |
| Inst Method | C:\Xcalibur\methods\90min-DDA-010620.meth |
| Proc Method | |
| User Text1 | |